



GROUTING MOULDER FOR JOINTS UP TO 3 MM WIDE WITH SUPERIOR WORKABILITY



Packaging:
4.4 lbs

Color:
Various

The best solution for filling grout or joints up to 3 mm wide in all types of ceramic tiles or wall tiles.

RECOMMENDED APPLICATIONS

- For filling grout or joints up to 3 mm wide in all types of ceramic tile.
- For interior, exterior, horizontal, vertical, residential, or commercial.
- Ideal for bonding calibrated or rectified ceramic floor and wall tile, porcelain tile, marble, natural stone, and glass mosaic.

BENEFITS

- Excellent adherence to the materials where it is applied.
- Its anti-fungus formula and integrated sealer give it a high resistance to humidity.
- Easy to apply, no additives are required.
- Leaves a fine finish.

Tiles

- Porcelain
- Ceramic
- Natural stone
- Glass
- Marble
- Granite

STANDARDS & LEED

Product	NMX	ANSI
Boquillex Juntas Extra Finas	C-532	A118.6

- Meets and exceeds all requirements of ANSI A118.6 and NMX C-532, mixed with water.
- *IEQc4.1 Low Emitting:** Adhesives and sealants as it contains zero VOC's.



INITIAL CONDITIONS

Make sure that the tile is solid and firm, with at least 24 hours of having been placed with its respective cement-adhesive, unless it indicates a different time.

COVERAGE

Tile size (cm)	Joint width 1/16"	Joint width 1/8"
1/4" x 1/4" x 1/4"	64	23
6" x 6" x 5/16"	75	43
8" x 8" x 3/8"	86	54
13" x 13" x 3/8"	129	65
18" x 18" x 3/8"	140	76
20" x 20" x 3/8"	160	86
24" x 24" x 3/8"	200	110

*Estimated coverage in sqft per 4.4 lb (2 kg) bag.

Note: The coverage shown here may vary depending on the surface conditions, the tools used, and the working methods employed. The best solution for grouting tile joints up to 1/8" (3 mm) wide in all types of ceramic tiles or wall tiles

AVAILABLE COLORS

Color	Code	Packaging
Brown	33961	2 kg
Light Brown	33959	2 kg
Champagne	33960	2 kg
Almond	33958	2 kg
White	33988	2 kg
Cloudy	34095	2 kg
Pearl Gray	34094	2 kg
Graphite	33962	2 kg
Black	33964	2 kg

SURFACE PREPARATION

Clean the joints before grouting, using a broom or clean brush, removing dry adhesive excess and dust. It is recommended to use a dry vacuum cleaner for this process. The surface temperature at the time of application should be between 44 °F (6 °C) and 90 °F (32 °C).

LIMITATIONS

Do not use **Boquillex Juntas Extra Finas** for installations requiring resistance to chemical attack. In these cases, use **TEXRITE EPOXYPLUS**.

PRECAUTIONS

- Do not mix with more water than indicated, to avoid color changes and low resistance.
- When you have to apply the product in places with temperatures above 90°F (32°C), keep the surface cool by the area. Spraying it with water without leaving puddles. In exteriors, try to shade the area.
- You can open the installation to light pedestrian or residential traffic after 24 hours, intense commercial pedestrian traffic after 48 hours; and vehicular traffic after 4 days.

ADDITIONAL REQUIREMENTS

- When applying **Boquillex Juntas Extra Finas** in exteriors, do it in the morning to avoid calcination by heat.
- Surfaces in direct sunlight should be cooled with clean water without saturating them and, if possible, shaded or worked when not in direct sunlight.
- Do not install outdoors if rain is expected within 24 hours, or freezing temperatures within 24 hours of installation in any area.
- Never prepare **Boquillex Juntas Extra Finas** with more water than indicated in the installation procedure.
- Wait a minimum of 72 hours before cleaning the finished area with detergents or intensive cleaning.

SAFETY

Do not inhale dust. May cause damage to eyes, skin, and lungs. It is recommended to wear an appropriate dust mask, gloves, and safety glasses. This material is alkaline when mixed with water, avoid contact with eyes and skin. Wet material adheres to skin and eyes if it dries. If contact with eyes and/or skin occurs, flush thoroughly with water. In case of ingestion, drink 1 to 2 glasses of water to dilute. Do not induce vomiting. Consult a physician immediately.

TECHNICAL DATA

Physical characteristics	Description
Appearance of the product	Fine powder in different colors
Proportion of water for mixing	23 ounces in 4.4 lbs
Volumetric weight (mixed)	14.35 lb/gal (1,720 kg/m³)
Mixing time	40 minutes remixing every 10-15 minutes
Time to open in transit	Light 24 hrs-Heavy 72 hrs
Shelf life	12 months stored in dry place and in original packaging
Thickness range	3/64" - 1/8" (1 mm - 3 mm)

Test	Results	STANDARDS
Final Set	4 hours	Not applicable
Immersion to dry water absorption	<6%	<10%
RESISTANCE AT 28 DAYS		
At flexion	> 420 psi	> 350 psi
RESISTANCE AT 28 DAYS		
Compression	> 3015 psi	≥ 3000 psi
Tension	> 355 psi	≥ 350 psi

ANSI A118.6

CEMIX GUARANTEE SYSTEM

At CEMIX we guarantee that our products (mortars, grouts, and membranes) are compatible as materials for the installation of ceramic tiles and porcelain tiles of any of the brands of floor and wall tiles that are commercialized in the country.

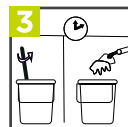
INSTALLATION STEPS



Add 23 oz. of clean water in a bucket.



Add the contents of the bag (2 kg) little by little and mix so that the powder is integrated into the water.



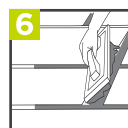
Let the mixture stand for 5 minutes, this will activate the adhesive components of the mixture.



Make sure that the grouts or joints to be filled are clean and free of dust, debris, or dried adhesive.



Wet the surface and joints using a sponge with clean water without leaving puddles.



Force **Boquillex Juntas Extra Finas** into the joint using a hard sponge trowel inclined at 45 degrees to the surface, moving the material with the trowel diagonally to the joints with constant pressure, leaving as little material as possible on the surface.




After 10 to 15 minutes remove the excess by rubbing with dry fiber and then wipe the surface of the tile with a damp sponge until clean. Wait another 20 minutes and wipe the entire surface with a dry cloth to remove final residue.

GUARANTEE

All Cemix products are inspected and tested prior to shipment. The process for making any claim for defective material and obtaining a replacement of the material in question is described below:

- To have a receipt, invoice, or proof of purchase of the product.
- To submit your complaint to our phone numbers: 82 88 67 27 in Monterrey and toll free from the interior of the country to 01 800 8383 00 or via email to infocemix@cemix.com.
- An authorized representative of the manufacturer will contact the customer and verify proof of purchase and the product as well as its installation (Cemix will not be responsible for damages or expenses arising from the installation, use or resale of such material).
- If, in the opinion of the representative, the defect is attributable to the factory, the manufacturer's responsibility will be limited to replacing the material in question and the customer must await his shipping instructions and authorization to make the return. The material will be replaced directly at the factory within 30 days after the failure of the representative.

For more information about our solutions:

Call toll free **+52 800 83 83 000** cemix.com
 /CemixOficial



Abril 2024